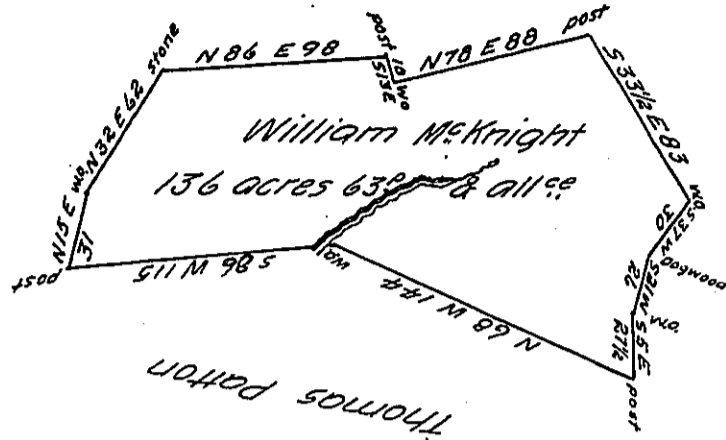


A-51-36

Simon Roofner



D-12-5-

C-109-7

THOMAS PATTON
C-172-135-

The above described tract of land is part of a tract of three hundred & ninety three acres & allowance which was surveyed to Thomas Patton in pursuance of a warrant bearing date the 5th day of September 1787 situate on the waters of Sewickley - in Mountpleasant Township in the County of Westmoreland

To John Lukens Esq.
Surveyor General

P-Benj Lodge D.S.

IN TESTIMONY that the above is a copy of the original remaining on file in the Department of Internal Affairs of Pennsylvania, made conformably to an Act of Assembly approved the 16th day of February, 1833, I have hereunto set my Hand and caused the Seal of said Department to be affixed at Harrisburg, this eleventh day of December 1905

George R. Brown
Secretary of Internal Affairs.